

# Appendix A

# Master Programme

CEDD Contract No. CV/2020/09  
Construction of Lei Yue Mun Public Landing Facility

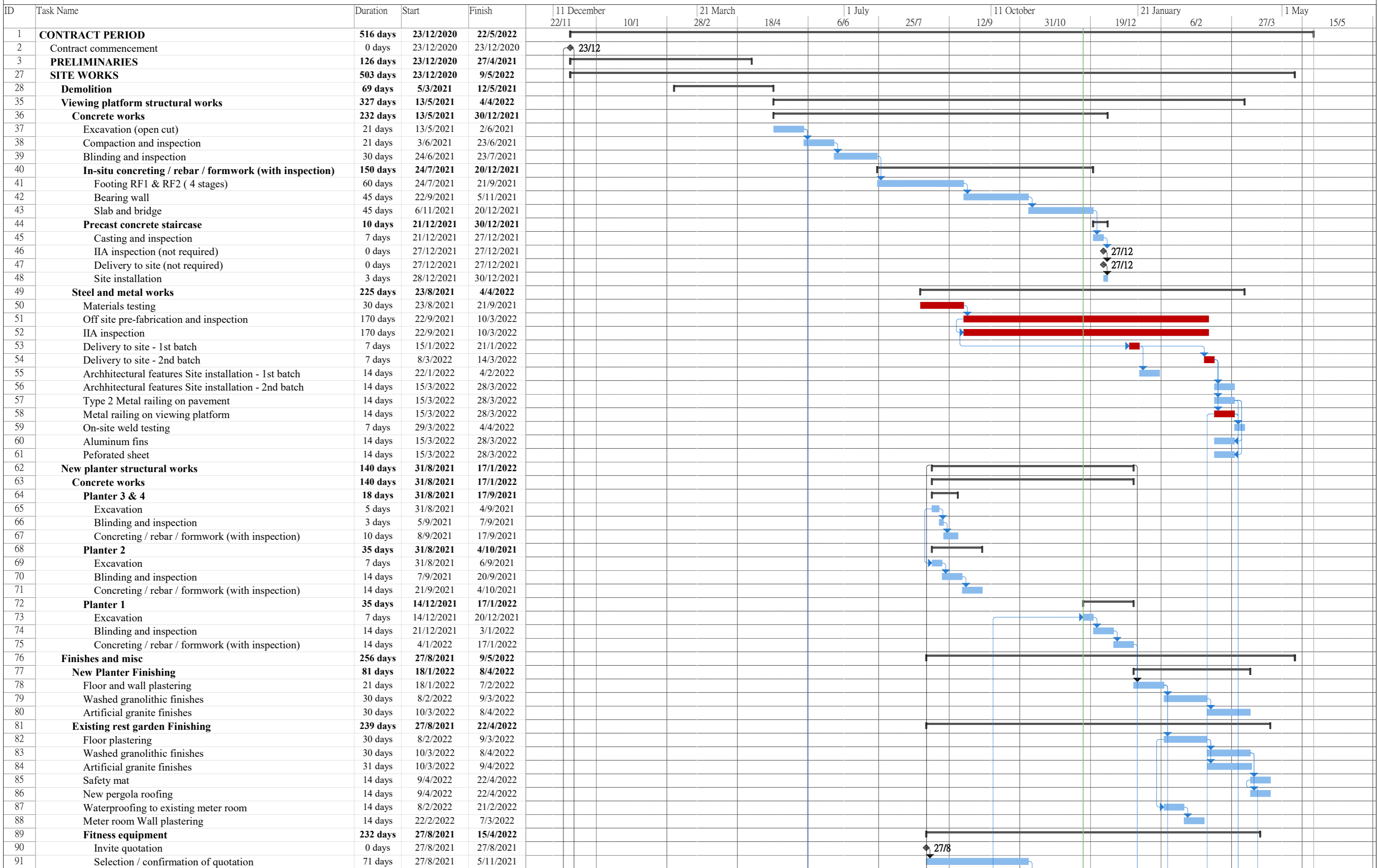
Act ID	Description	Orig Dur	Early Start	Early Finish	Total Float	2022																							
						FEB				MAR				APR				MAY				JUN							
						31	07	14	21	28	07	14	21	28	04	11	18	25	02	09	16	23	30	06	13	20	27		
<b>Key Dates</b>																													
<b>Contract Date and Starting Date</b>																													
K1-1000	Acceptance of Tender	0	15DEC20 A																										
K1-1100	Commencement of the Works	0	29DEC20 A																										
<b>Completion Dates</b>																													
K2-1000	Section 1 of the Works	0		30APR23 *	0																								
K2-1010	Section 2 of the Works	0		30APR23 *	0																								
K2-1020	Section 3 of the Works	0		28FEB22 *	0																								
K2-1100	Whole of the Works	0		30APR23 *	0																								
<b>Site Access Dates</b>																													
K3-1000	Access to Part A of the Site	0	29DEC20 A																										
K3-1010	Access to Part B of the Site	0	29DEC20 A																										
K3-1020	Access to Part C of the Site	0	24DEC21 A																										
K3-1030	Access to Part D of the Site	0	29DEC20 A																										
K3-1040	Access to Part E of the Site	0	29DEC20 A																										
K3-1050	Access to Part F of the Site	0	29DEC20 A																										
<b>Bill No. 1 - Preliminaries</b>																													
<b>General Preliminaries</b>																													
B1-1000	Statutory Notifications (LD/EPD/CIC/PCFB)	28	15DEC20 A	11JAN21 A																									
B1-1010	Notification of Marine Works	21	28JAN21 A	17FEB21 A																									
B1-1100	General Site Clearance	28	29DEC20 A	25JAN21 A																									
B1-1200	Provision of Land Transport for PM	7	29DEC20 A	04JAN21 A																									
B1-1210	Provision of 24-hr Telephone Hotline	7	29DEC20 A	04JAN21 A																									
B1-1220	Design of Project Website	38	22FEB21 A	30MAR21 A																									
B1-1300	Initial Topographic Survey	21	05JAN21 A	25JAN21 A																									
B1-1301	Initial Hydrographic Survey	10	10AUG21 A	19AUG21 A																									
B1-1310	Condition Survey	6	03FEB21 A	08FEB21 A																									
B1-1320	Establishment of Structural Monitoring	14	26JAN21 A	08FEB21 A																									
B1-1400	Tree Survey & Tree Risk Assessment	10	19JAN21 A	28JAN21 A																									
B1-1410	Tree Felling	10	29JAN21 A	07FEB21 A																									
B1-1500	Submission of Noise Management Plan	30	01APR21 A	30APR21 A																									
<b>Site Establishment</b>																													
B1-2000	Erection of Site Hoarding	21	05JAN21 A	25JAN21 A																									
B1-2100	Provision of Contractor's Site Accommodation	28	12JAN21 A	08FEB21 A																									
B1-2110	Provision of PM's Principal Site Office	31	12APR21 A	12MAY21 A																									
B1-2120	Provision of PM's Container Site Office	31	26APR21 A	26MAY21 A																									







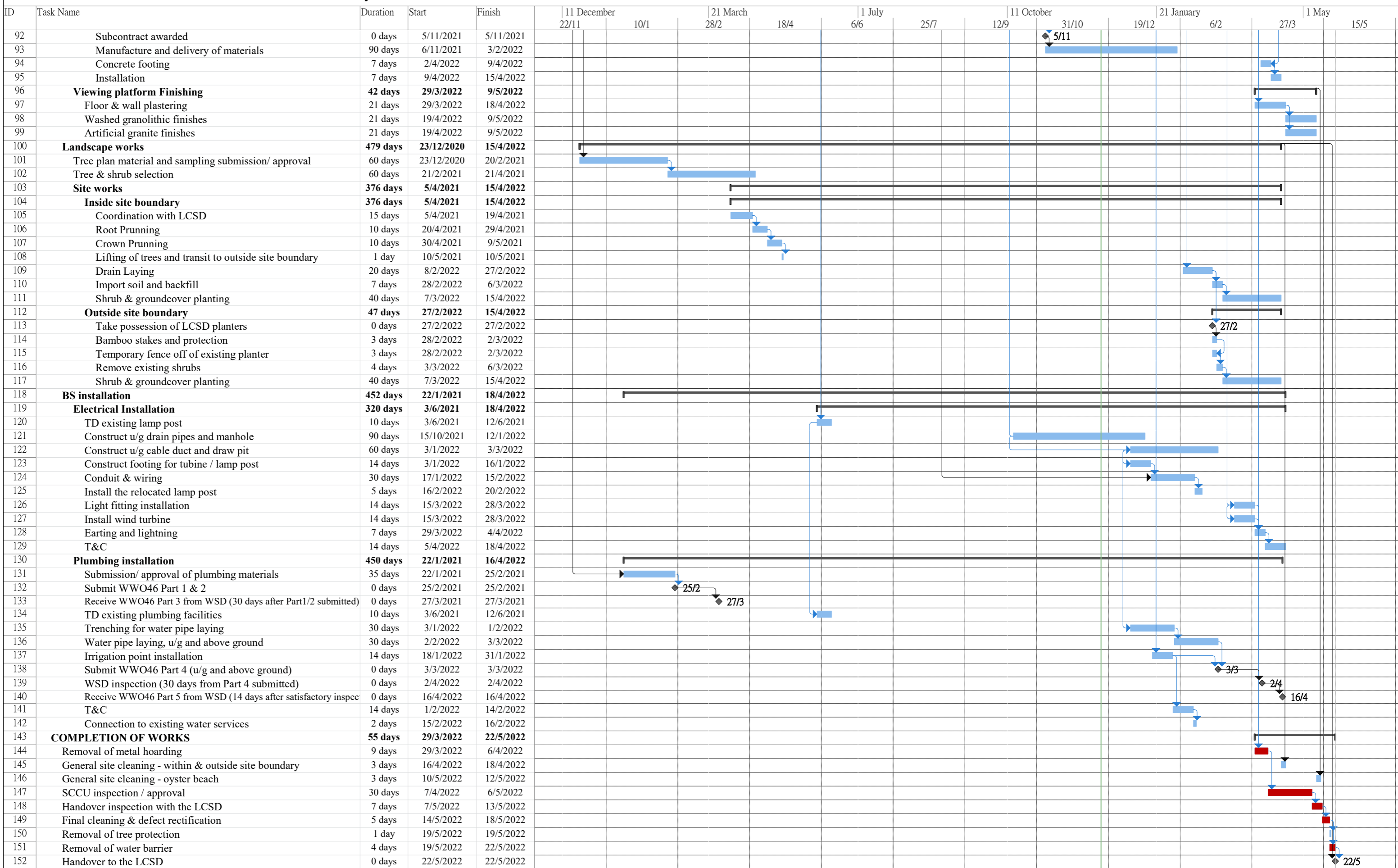




Project: SSJ521- LeiYuMun const p  
 Date: 14/12/2021

..... Critical Split    
  Task    
  Split    
  Milestone    
 ◆ Milestone    
 Summary    
 Project Summary    
 Critical    
 Manual Progress





Project: SSJ521- LeiYuMun const p    Critical Split    Task    Split    Milestone    Summary    Project Summary    Critical    Manual Progress